

MIMESweeper™ Email Appliance

Email security all figured out.

Plug in. Switch on. Relax.

The problem

Seemingly overnight, email became the lifeblood of every enterprise. But with email came email-borne threats. Spam is expected to surpass 90% of all message traffic in the next few years. New viruses, worms and trojans capable of bringing down entire systems emerge every day. A new generation of spyware is burying itself onto millions of desktops.

And inbound threats are only the beginning. What leaves the enterprise via outbound email can do even more damage. The news is full of reputation-destroying stories about email misuse, loss of confidential data and the spreading of harassment or hatemail.

All this continues to happen despite the increasing amount of time that IT departments have been forced to spend securing and managing email traffic. This resource drain itself is a priority issue. Clearly, businesses cannot afford to compromise on email security.

The solution

The MIMESweeper Email Appliance is the zero-compromise email security solution that covers all email threats in a single box that's easy to deploy, manage and support.

For the first time, all the essential, best-of-breed email security software is integrated with pre-installed policies on a hardened Linux operating system, all running on Dell hardware. For enterprises deploying more than one appliance, multi-box management of policies and quarantines makes life simple for users and administrators.

The result? Email security that is plugged in, switched on and left to do the jobs that currently need at least three applications and an entire team of administrators to handle.

Email security all figured out

Appliances are supposed to be easy. But most still demand constant managing and updating.

Even worse, most appliances simply don't provide the level of protection or performance that enterprises demand. The policy support is minimal, the management capabilities are inadequate, and the accuracy levels just aren't there – letting all sorts of threats through while legitimate business mail is often stopped.

The MIMESweeper Email Appliance combines the 'zero-compromise' security the world expects from Clearswift, with the plug 'n' play manageability of an appliance and the multi-box support you'd expect from an enterprise-class solution.

"The fact that it is an appliance does not mean that the product is limited in its functionality in any way."

The Butler Group

The right functionality

The MIMESweeper Email Appliance covers all email threats, inbound and outbound on a single box:

- New generation of the award-winning SpamLogic™ anti-spam technology.
- Best-of-breed anti-virus, anti-spyware and anti-phishing by Kaspersky
- Award-winning content filtering by MIMESweeper

No solution is complete if it can't do all three jobs. The MIMESweeper Email Appliance does them all with market-leading, multi-award-winning performance and adds TLS encryption as a standard feature.

Email security all figured out:

- New generation of the award-winning SpamLogic™ anti-spam technology.
- Best-of-breed anti-virus, anti-spyware and anti-phishing by Kaspersky
- Award-winning content filtering by MIMESweeper
- TRUSTmanager™ sender reputation service
- TLS Encryption
- Personal Message Management that allows users to manage quarantines from all gateways in a single interface
- Multi-box policy replication for easy deployment and central updates
- All in a plug 'n' play, hardened Linux server
- With the best – and easiest – management interface of any appliance
- Multi-box message management and tracking on the EN range ensures a consolidated and more flexible ability to deal with policy violations
- All backed by Clearswift Global Support

Why it's so easy

The whole idea of an appliance is user friendliness. The MIMESweeper Email Appliance sets new standards for ease-of-use:

- **Easier to install** – A single sheet of paper comes in the box. Only seven steps that take under an hour.
- **Easier to manage** – The simplest, most intuitive management console on the market, with the richest reporting.
- **Easier to release messages** – with user-driven management of inbound and outbound quarantines
- **Easier to maintain** – Auto-updates come every fifteen minutes. New rules are set in minutes.
- **Easier to support** – Clearswift's global support is everywhere.
- **Easier to diagnose** – with a single interface to all the standard availability tests
- **Easier to upgrade** – With new revisions downloaded automatically and auto-rollback to revert to any previous state.
- **Easier to buy** – Thanks to the largest network of dealers in the security business.
- **Easier to justify** – Best-of-breed anti-virus, anti-spyware, anti-spam and content filtering on a single, plug'n'play, Linux powered appliance.

SpamLogic™ anti-spam

"SpamLogic yields far better, and more adaptable results than any single approach – a modern rather than legacy approach."

Delphi

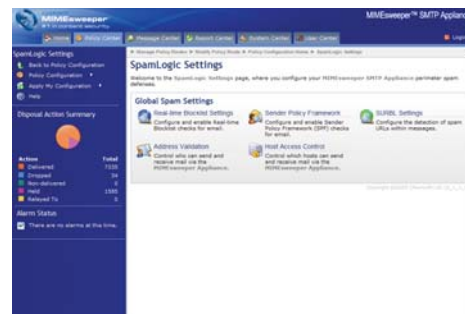
As the market leader in content filtering, fighting spam has always been an important part of our solution set. So we called in John Graham-Cumming, world-renowned expert in spam-fighting, to work with us to develop a better one. The result is SpamLogic, the most accurate spam filter on the market.

SpamLogic uses a whole battery of defenses, orchestrated in a completely new way to deliver the best accuracy rates available (up to 99%). The defenses include Bayesian analysis, sender policy framework & sender ID, textual analysis, auto-whitelisting, tar pitting and real-time blacklisting, supported by continuous feeds from the SURBL database.

Some of these defenses are in other anti-spam solutions. The difference is how they're combined and tuned – something SpamLogic does measurably better. The new generation of SpamLogic includes a second layer of signatures hand-crafted by specialists to identify the styles of specific spammers. Choose how intensive you want the detection to be and leave it to SpamLogic - with updates as often as every minute to head off spam before it hits your in-boxes.

NEW! TRUSTmanager

Checks the reputation of all connecting SMTP hosts against a constantly updated database of reputation scores provided by Clearswift. The host is evaluated for previous spam related activities and awarded a "reputation score" of sender trustworthiness.



www.clearswift.com/reviews

Anti-virus, anti-spyware and anti-phishing from Kaspersky

We could have chosen any anti-virus tool on the market to bundle with our email appliance. We chose Kaspersky because it's quite simply at the cutting edge of the anti-virus world.

Kaspersky pushes out more signatures than anyone and wins more awards, too. The Kaspersky Virus Lab disarms as many as 200 new threats per month and, after decades of anti-virus experience, has over 120,000 virus records in its database.

- Disinfects all types of malicious code, including viruses, Trojans, worms, Java applets, spyware, adware, phishing ActiveX and more.
- Filters incoming and outgoing email in real time.
- Automatic updates every 15 minutes, round the clock, with urgent updates even more frequently, during outbreaks.
- High-performance with iChecker™ and iStreams™ technologies eliminating the need to repeatedly scan the same objects.

Bottom line: there's no better anti-virus solution on the market and we include it with every MIMESweeper Email Appliance.

MIMESweeper content filtering

Content filtering stops the less obvious threats that are even more dangerous than spam and viruses. Like confidential data being emailed to a competitor, and illegal, immoral or just plain unpleasant material coming into or leaving a network.

It also protects against Zero-day viruses – malware that's so new its profile has not yet been uploaded to anti-virus software.

MIMESweeper invented content filtering and we're still significantly ahead of everyone else, with the highest-performance and most accurate filtering engine as well as the most granular policy management on the market.



The right hardware and OS

The appliance software is pre-integrated with a hardened Linux operating system with no known exploits. And the whole thing is loaded on award-winning Dell hardware ready to rack-and-forget.

The easiest management interface you've ever seen

The MIMESweeper Email Appliance lets IT staff remotely manage, update, monitor and report through a web-based interface that sets new standards in user-friendliness.

Anyone that can use a browser has got more than enough skills to run the management console, complete with policy manager, report center and scheduler.



Multi-box Policy Management

Now the email appliance has multi-box policy replication to make it even easier for administrators managing multiple appliances. Set the policy on any appliance and the policy automatically replicates to all the others. It's simpler, faster and prevents errors.

Multi-box Management and Tracking

The EN range of email appliances benefits from the additional features, multi-box message management and tracking; enabling message areas, queues and tracking to be managed across all peer appliances as if they were one appliance.

"It delivers tough anti-spam and anti-virus measures and presents them in one of the best web management interfaces we've yet seen"

Network Computing

Personal Message Manager takes the burden from IT staff

With PMM, users can release their own messages from quarantine with no intervention from the IT department.

When their mail is quarantined, users receive an alert, with built in response buttons. With a single click, they can release or delete each quarantined message, with the actions saved to a PMM log file.

Personal Message Manager removes a significant burden from the IT department, replacing it with simple, transparent user management.

The Outbound Gatekeeper

Uniquely, Personal Message Manager also applies to outbound messages. This allows administrators to give named executives the authority to over-ride policy by releasing a quarantined outbound message and creating a record of the action.

Previously, the only way to allow this authority would be to make the individual exempt from the policy altogether. With the Outbound Gatekeeper functionality, policy is protected, authorized users are empowered and audits are preserved.

Gatekeeper also gives the sender a final safety mechanism, asking them to confirm their desire to release the message in question.

Consolidated PMM

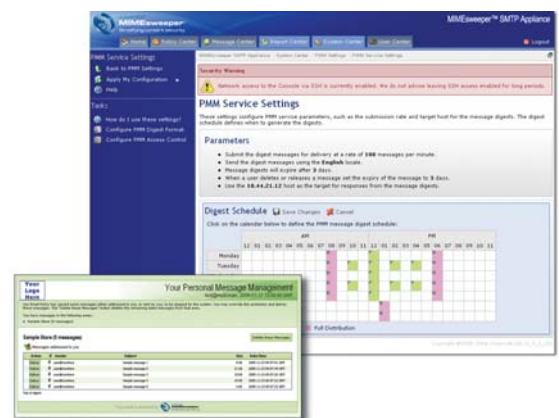
In multi-box environments, any designated email appliance automatically aggregates all email digests from every appliance and presents a single digest to the user. It's Message Management made transparent.

"The MIMESweeper Email Appliance neatly swerves away from the low-end, shrink-wrapped area of the market where appliances are meant to be heading and makes it the serious sale it deserves to be."

MicroScope

Message Parking

The email appliance includes one of the most popular features of the software version: Message Parking. Now you can schedule the release of messages depending on their size or other properties. Clear quarantines on a scheduled basis or hold large files for delivery when the network is less congested. Or 'pre-release' messages for sending at a specific time.



MIMesweeper™ Email Appliance



Model Shown : CS1000, EN10, EN20

CS Series:

CS250 - entry level offering for up to 250 mailboxes

The CS250 meets the needs of the smaller organization, providing award winning anti-virus, anti-spam, anti-spyware, anti-phishing and content filtering. The CS250 is a complete solution, designed for ease of use at an affordable price.

CS500 - companies with up to 500 mailboxes

Small and medium-sized companies can now benefit from the same powerful email security as the largest enterprises. The CS500 includes best-of-breed anti-spam, anti-virus and content filtering on a hardened Linux box. Management is simplified with auto-updates and the best web-based interface on the market. With 1GB of RAM and 80GB of storage it's more than enough for the job.

CS1000 - ramping up to 1000 mailboxes

Medium-sized companies (up to 1000 mailboxes) need to alleviate the burden of IT administrators and yet cannot compromise on their email security. The CS1000 starts with complete anti-spam, anti-virus and content filtering, then bumps up the performance, 2GB RAM and dual 80GB disk in a RAID 1 configuration with an embedded RAID controller – all in a 1U chassis. Resilience is enhanced with a dual Gigabit network controller and dual hot-swap power supply. It's all the email security you'll need.

EN Series:

EN10 - the enterprise appliance

As your enterprise grows, so will the EN10. It offers all the performance and resilience of the CS1000 but scaling beyond 1000 mailboxes with the aid of dual Xeon processors. Enterprise-class anti-spam, anti-virus, anti-spyware, anti-phishing and content filtering have never been so easy. Multi-box policy management, message management and tracking complete the picture.

EN20 - top of the enterprise line

Large enterprises need zero-compromise email security with maximum throughput, performance, redundancy and ease of management. The EN20 jumps up to two appliances (1U apiece) each with dual processors and packing in two pairs of dual 73GB RAID configurations, each with its own RAID controller, plus dual network controller and dual hot-swap power. RAM is bumped up to 4GB. The EN20 can handle whatever volumes you throw at it, without missing a threat.

The Enterprise Class Solution

- **Multi-box Policy Management** - set policy once, broadcast to all appliances
- **Consolidated Personal Message Management** - many appliances, one unified digest for users
- **Resilience and fault tolerance** - for maximum uptime
- **Rapid diagnostics** - with a central console for all standard availability tests
- **No enterprise is too big for MIMesweeper!**

About Clearswift

Clearswift simplifies content security. Our products help organizations enforce best-practice email and web use, ensuring all traffic complies with internal policy and external regulations. Our range of content filtering solutions makes it easy to deploy, manage and maintain no-compromise email and web security for both inbound and outbound traffic.

Clearswift is the only vendor to offer comprehensive, policy-based content security in all three deployment methods: as software, as an appliance and as a managed service. All three platforms are designed to take the hassle out of securing internet traffic, with a clear, intuitive management interface; automatic, 'zero-touch' updates; powerful reporting and common-sense policy management.

Twenty years of experience across 17,000 organizations has helped us raise security standards while simplifying security management at the same time. We've helped many of the world's most successful organizations use the internet with confidence and are committed to staying ahead of the market and helping our customers defend against all emerging threats.

Contact Clearswift

United States

100 Marine Parkway, Suite 550
 Redwood City, CA 94065
 Tel: +1 800 982 6109 | Fax: +1 888-888-6884

United Kingdom

1310 Waterside, Arlington Business Park, Theale,
 Reading, Berkshire, RG7 4SA
 Tel: +44 (0) 11 8903 8903 | Fax: +44 (0) 11 8903 9000

Spain

Cerro de los Gamos 1, Edif. 1
 28224 Pozuelo de Alarcón, Madrid
 Tel: +34 91 7901219 / +34 91 7901220 | Fax: +34 91 7901112

Germany

Amsinckstrasse 67, 20097 Hamburg
 Tel: +49 40 23 999 0 | Fax: +49 40 23 999 100

Australia

Ground Floor, 165 Walker Street, North Sydney,
 New South Wales, 2060
 Tel: +61 2 9424 1200 | Fax: +61 2 9424 1201

Japan

Hanai Bldg. 7F, 1-2-9, Shiba Kouen Minato-ku
 Tokyo 105-0011
 Tel: +81 (3) 5777 2248 | Fax: +81 (3) 5777 2249

Appliance

MIMesweeper™ Email Appliance
 MIMesweeper™ Web Appliance
 MIMesweeper™ IM Appliance

Software

MIMesweeper™ for SMTP
 MIMesweeper™ for Web
 MIMesweeper™ for Exchange
 MIMesweeper™ for IM
 MIMesweeper™ for Domino
 Bastion™
 DeepSecure™

Managed Service

MIMesweeper™ Email Managed Service