

MIMESweeper™ Web Appliance

Web security simplified.

Enterprise-class security in a plug 'n' play box.

The problem

For years enterprises have been protecting themselves against email-borne threats while leaving web traffic relatively unprotected. This situation is changing fast, as businesses wake up to the many web-based hazards that threaten corporate reputations, drain resources, attack confidential data and inhibit employee productivity.

Spyware, viruses, Trojans, illegal material and inappropriate content flows freely across the web, ready to pour into unprotected corporate browsers. These inbound threats are matched by outbound hazards such as confidential leaks through web mail, instant messaging and unauthorized transfers.

New legislation has moved data leak prevention up the corporate agenda as regulators demand new levels of protection for credit card details, health records and account information.

Emerging Web 2.0 threats

On top of the hazards of traditional web browsing, a new generation of threats has been born with the emerging phenomenon of Web 2.0 – including blogs, wikis, P2P and social networking.

Unlike email, sensitive data leaked on a blog or social networking site can be seen, linked to and forwarded by thousands of people in a few minutes. And as Web 2.0 applications become more popular, they're also targeted by a new breed of malware – new worms, Trojans and viruses written specifically to attack blogs, wikis, P2P and social networking sites.

Clearly, it's time to protect web and Web 2.0 traffic with the same vigilance given to email. Unfortunately, web security means deploying, maintaining and managing four different solutions – anti-virus, anti-spyware, URL filtering and content security – each with its own policy administration and reporting.

What's needed is a single, comprehensive solution that covers all web-based and Web 2.0 threats, inbound and outbound, while reducing the burden on IT and networking teams.

The solution

The MIMESweeper Web Appliance is the first enterprise-class web security solution that covers all web threats in a single box that's easy to deploy, manage and support. For the first time, all the essential, best-of-breed web security software is integrated with pre-installed policies on a hardened Linux appliance and future-proofed with auto-updating of all its software components.

The MIMESweeper Web Appliance combines Clearswift's award-winning content security with best-of-breed URL filtering, anti-virus and anti-spyware technology into an integrated, easy-to-manage web security solution.

Replacing existing point technologies with the new MIMESweeper Web Appliance will save significant time and money. Lesser-integrated solutions offer a 'good enough' approach and fall short in either their manageability, their ability to analyze content, or the depth of security available. The new web security appliance delivers no-compromise security that's easy to deploy and manage.

Enterprise web security – ready to go

The MIMESweeper Web Appliance combines the enterprise-class security you'd expect from Clearswift, with the plug 'n' play manageability of an appliance.

Four solutions in one

- **URL Blocking** – with the world's number one URL Filter you decide which classes of sites to block and which sites to allow.
- **Award-winning anti-virus protection** – when it comes to detection rates, especially of complex malware, Kaspersky Labs is the clear leader. Hourly updating, plus emergency updates as needed, ensure continuous protection is optimized.
- **World-leading anti-spyware** – the Internet Gateway anti-spyware from Aluria (now part of EarthLink) offers one of the most comprehensive spyware databases' in existence with full auto-updating for round-the-clock protection.
- **MIMESweeper content security** – the world's most powerful and most deployed content security engine with granular policy management and zero-day protection policy control – with Web 2.0 security built in.

Four web security solutions in one integrated package represents great value. But four of the very best solutions in a single appliance is unprecedented.

Web threats: you're covered

- **Protect against** – all web and Web 2.0 threats in one, plug 'n' play appliance
- **Stop malware and much more** – viruses, Trojans, spyware, inappropriate browsing and loss of confidential information
- **Prevent Web 2.0 data leakage** from blogs, wikis, RSS feeds, P2P, social networking sites...
- **Deploy four defenses in one** – integrated anti-virus, anti-spyware, URL blocking and content filtering
- **Ease the admin burden** – easy to deploy, configure, maintain and update

87 per cent of US office workers access Web 2.0 sites each week, with 63 percent accessing the sites one or more times a day.

Clearswift/Zoomerang Survey March 2007

Total security, out-of-the-box

The MIMESweeper Web Appliance is designed to be easy to deploy, manage, maintain and update.

- **30-minute deployment** – one-page, seven steps, you're done.
- **Pre-configured policies** – start protecting you from the first minute; with plenty of scope to configure policies to suit your organization.
- **Pre-integrated solution** – with a single processing engine, interface and report center.

Prevent data leaks and Web 2.0 breaches

Comprehensive outbound protection against confidential data leaks via web-based email, file transfers and Web 2.0 applications, from blogs and wikis to P2P and social networking sites.

The ultimate interface

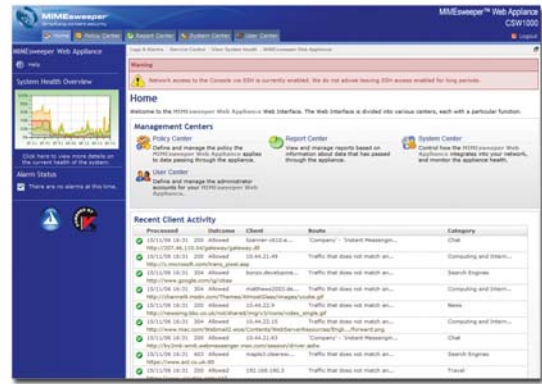
Administrators enjoy a clear, intuitive interface that simplifies management, configuration and reporting. The email version of the same interface has won plaudits from across the IT media. Now we're bringing the same power and simplicity to web security.

Granular policy management

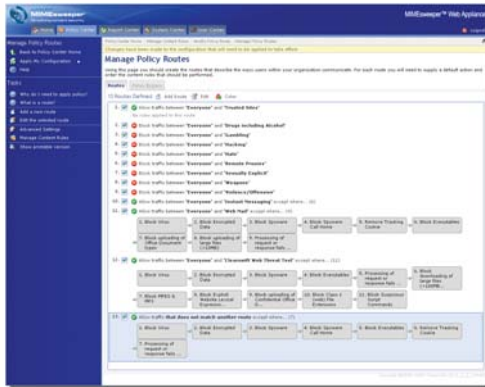
Like all Clearswift products, the MIMESweeper Web Appliance offers the most granular policy management on the market.

Set policy virtually any way you need to – by user; department; group; machine; IP address; location; gateway; traffic type; or any combination.

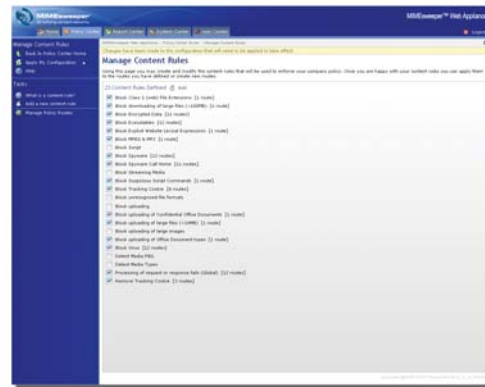
Multi-box peering allows administrators to set policy once and propagate it out to every appliance (maximum of 8 other appliances). Reporting is based on data aggregated from all deployed appliances, with separate views available for each. Including full AD/LDAP integration for user based policies, if required.



Clearswift's award winning graphical user interface



Complete clarity on Policy Rules



Simple to match Content rules to Policies

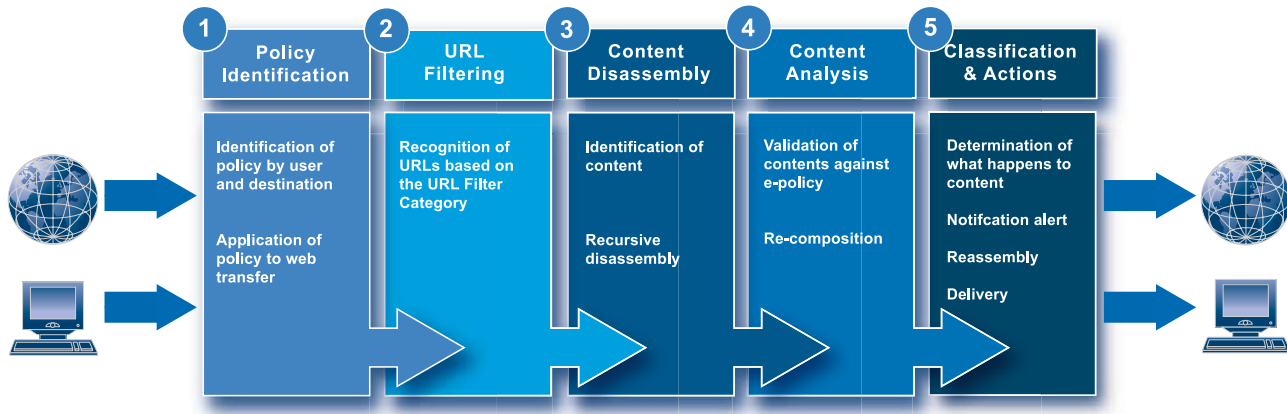
Easy to live with

The MIMESweeper Web Appliance sets new standards for ease-of-use:

- **Easy to install** – thirty minutes and you're ready to go
- **Easy to manage** – with the clearest management console on the market
- **Easy to maintain** – with non-stop auto-updates and fast policy changes
- **Easy to support** – Clearswift's global support is everywhere
- **Easy to diagnose** – with a single interface to all the standard availability tests
- **Easy to upgrade** – with new revisions downloaded automatically and auto-rollback to revert to any previous state
- **Easy to buy** – thanks to the largest network of dealers in the security business
- **Easy to justify** – best-of-breed anti-virus, anti-spyware, URL-blocking, and content filtering on a single, plug 'n' play Linux appliance

Comprehensive alerting

When a policy is breached, MIMESweeper can alert your management console using SNMP or generate email or SMS alerts, depending on the type and severity of breach. It's now easier than ever to prevent and respond to data leakage that can seriously damage your reputation.



Robustness of policy, Granularity of policy, Management of policy and violations

MIMESweeper content filtering

Content filtering stops the less obvious threats that are even more dangerous than Trojans and viruses. Like confidential data being web-mailed to a competitor, and illegal, immoral or just plain unpleasant material coming into or leaving the network. It also protects against zero-day attacks – malware that's so new its profile has not yet been uploaded as an anti-virus software signature.

MIMESweeper invented content filtering and we're still significantly ahead of everyone else, with the highest-performance and most accurate filtering engine as well as the most granular policy management on the market.

MIMESweeper content filtering includes binary file recognition and lexical analysis of URL's requested; HTTP headers; web page contents and all payload file types including MS Word and Excel documents.

Lexical Templates are provided to make it easier to identify credit card numbers, social security or national insurance identifiers and the personal identifiable information that regulators demand you protect. You can also make your own lexical templates for any kind of information you need to know about before it leaves the enterprise.

Anti-spyware from Aluria

Spyware is a major threat to every corporation, with huge numbers of new keystroke loggers, rootkits and other malicious programs infecting computers and endangering networks everyday.

Spyware detection from Aluria prevents spyware from penetrating beyond the gateway, with:

- **Signature-based detection** – with market-leading signature library and round-the-clock updates from Aluria's Threat Prevention Systems™
- **IP Address and URL protection** – verified database provides more accurate and reliable scan results, preventing costly false positives
- **Spyware 'call home' prevention** – stopping the suspicious traffic generated by spyware and reporting so who is infected is clear

The Aluria spyware database started in 1999 is one of the worlds most definitive and is constantly updated and supported in real-time by Aluria's research team and through direct ties to EarthLink's 5+ million residential and commercial subscribers and via other major ISP's



Anti-virus from Kaspersky

Kaspersky create and deliver more signatures than anyone and win more awards, too. The Kaspersky Virus Lab disarms often as many as 200 new threats per month and, after decades of anti-virus experience, has over 120,000 virus records in its database.

- Scans all incoming email traffic in real time and removes any malicious programs that it detects.
- Disinfects all types of malicious code, including viruses, Trojans, worms and Java applets.
- Automatic updates every 15 minutes, round the clock, with urgent updates even more frequently during outbreaks.

Bottom line: there's no better anti-virus solution on the market and we include it within every MIMESweeper Web Appliance.



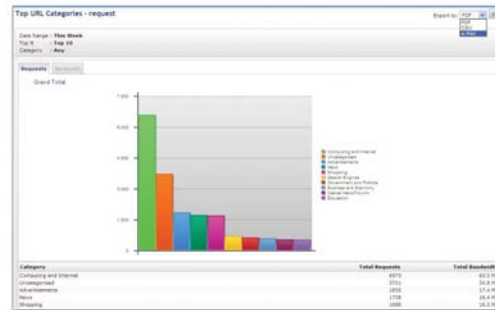
MIMESweeper™ Web Appliance

The world's leading URL Filter

The URL filter blocks web access to any category of website blacklisted by your security policy and is based on a comprehensive URL database of well over a billion web pages and 18 million website URLs.

When a user requests a web page the URL filter identifies the web access privileges and the requested URL, which is then checked against the policy blacklist. If the site is blacklisted the transfer is blocked; the user is notified; the event is logged; reported, and if the policy demands it notified to an administrator.

Over 40 categories of website, covering 50 languages, makes it easy to apply your policy. And, all activity, blocked and allowed, is recorded for in-depth reporting to analyze web usage and traffic patterns.



Graphical reporting supports fully interactive drill downs

Specifications

Optimized Proxy Performance

Finely tuned to hardware and OS for maximum throughput at wire speed - reducing HTTP network latency to a minimum.

Security

The software is all pre-integrated on a Clearswift hardened Linux operating system with no known exploits.

Physical dimensions

Available in standard 1U rack-mounted server format.

The Children's Internet Protection Act (CIPA)

The Federal Law enacted by Congress in December 2000 to address concerns about access to offensive content over the Internet on school and library computers. CIPA imposes certain types of requirements on any school or library that receives funding support for Internet access, or internal connections from the "E-rate" program - a program that makes certain technology more affordable for eligible schools and libraries. The MIMESweeper Web Appliance meets all the criteria for CIPA requirements and if twinned with the MIMESweeper IM Appliance will ensure HTTP cannot be circumvented by students using anonymizers and other alternative proxies.

About Clearswift

Clearswift simplifies content security. Our products help organizations enforce best-practice email and web use, ensuring all traffic complies with internal policy and external regulations. Our range of content filtering solutions makes it easy to deploy, manage and maintain no-compromise email and web security for both inbound and outbound traffic.

Clearswift is the only vendor to offer comprehensive, policy-based content security in all three deployment methods: as software, as an appliance and as a managed service. All three platforms are designed to take the hassle out of securing internet traffic, with a clear, intuitive management interface; automatic, 'zero-touch' updates; powerful reporting and common-sense policy management.

Twenty years of experience across 17,000 organizations has helped us raise security standards while simplifying security management at the same time. We've helped many of the world's most successful organizations use the internet with confidence and are committed to staying ahead of the market and helping our customers defend against all emerging threats.

Contact Clearswift

United States

100 Marine Parkway, Suite 550
 Redwood City, CA 94065
 Tel: +1 800 982 6109 | Fax: +1 888-888-6884

United Kingdom

1310 Waterside, Arlington Business Park, Theale,
 Reading, Berkshire, RG7 4SA
 Tel: +44 (0) 11 8903 8903 | Fax: +44 (0) 11 8903 9000

Spain

Cerro de los Gamos 1, Edif. 1
 28224 Pozuelo de Alarcón, Madrid
 Tel: +34 91 7901219 / +34 91 7901220 | Fax: +34 91 7901112

Germany

Amsinckstrasse 67, 20097 Hamburg
 Tel: +49 40 23 999 0 | Fax: +49 40 23 999 100

Australia

Ground Floor, 165 Walker Street, North Sydney,
 New South Wales, 2060
 Tel: +61 2 9424 1200 | Fax: +61 2 9424 1201

Japan

Hanai Bldg. 7F, 1-2-9, Shiba Kouen Minato-ku
 Tokyo 105-0011
 Tel: +81 (3) 5777 2248 | Fax: +81 (3) 5777 2249

Appliance

MIMESweeper™ Email Appliance
 MIMESweeper™ Web Appliance
 MIMESweeper™ IM Appliance

Software

MIMESweeper™ for SMTP
 MIMESweeper™ for Web
 MIMESweeper™ for Exchange
 MIMESweeper™ for IM
 MIMESweeper™ for Domino
 Bastion™
 DeepSecure™

Managed Service

MIMESweeper™ Email Managed Service